

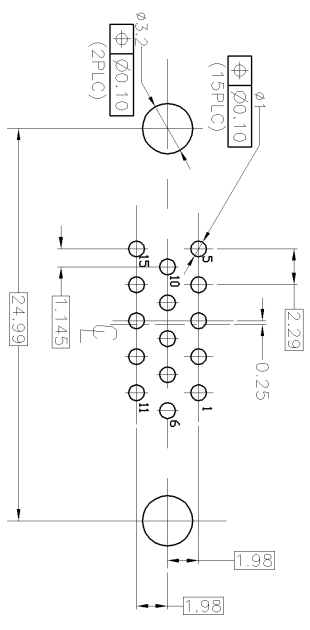
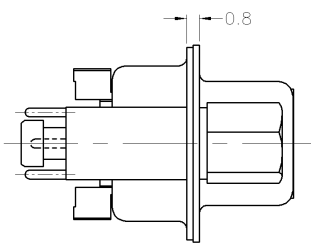
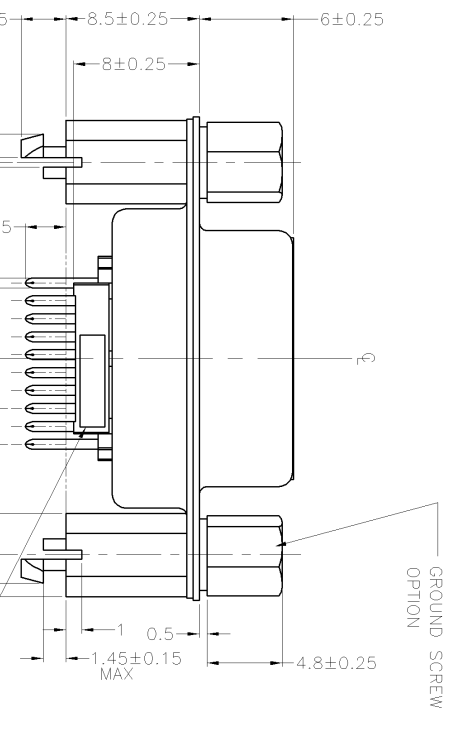
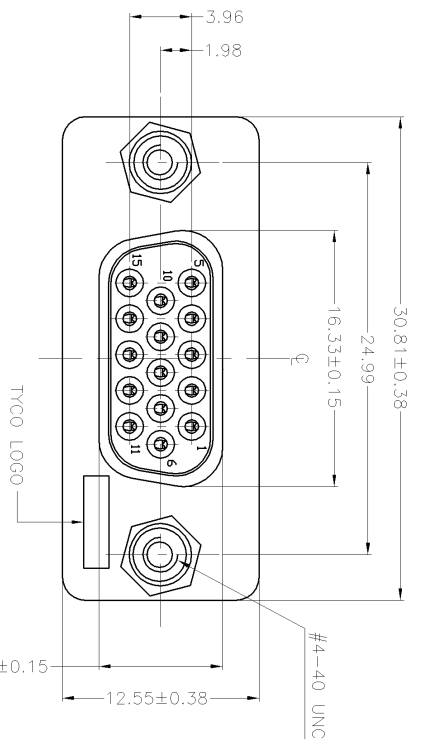
4

3

2

1

LOC	DIST	REV	DESCRIPTION	DATE	BY	APP'D
ES	00	P	LTR		A	S.Y
			REVISIONS	01JUL08	A.L	S.Y



RECOMMENDED P.C.B. LAYOUT  
PCB TOLERANCE: ±0.05

- NOTES:
- △ MATERIAL:  
HOUSING: THERMOPLASTIC:UL94V-0,BLACK COLOR  
CONTACT: COPPER ALLOY  
BOARDLOCK:STEEL  
GROUNDING SCREW :STEEL  
FRONT SHELL : CARBON STEEL  
REAR SHELL : CARBON STEEL
  - △ FINISH:  
CONTACT : GOLD FLASH ON CONTACT AREA.  
TIN PLATING ON SOLERDTAILS.  
NICKEL UNDERPLATING OVERALL.  
SHELL : TIN PLATING.  
BOARD LOCK : TIN PLATING.  
GROUNDING SCREW : NICKEL PLATING.
  - 3. RECOMMENDED PCB THICKNESS : 1.6mm

- 1 AS SHOWN

THIS DRAWING IS A CONTROLLED DOCUMENT.		DATE		SCALE	
DIMENSIONS: mm		30JUN06	2:1		SHEET
TOLERANCES UNLESS OTHERWISE SPECIFIED:		CHK	1 OF 2		REV
0 PLC ± 0.5		AP'D			A
1 PLC ± 0.3		TYCO Electronics Corporation			
2 PLC ± 0.2		Shanghai, P.R.China.200233			
3 PLC ±		CUSTOMER DRAWING			
4 PLCS ±					
FINISH ± 1"					
		CUSTOMER DRAWING			

RECEPTACLE VERTICAL 15P AMP/LMITE	
SIZE	CAGE CODE
A3	00779
DRAWING NO	1932144
RESTRICTED TO	

A

B

C

D

A

B

C

D

4

3

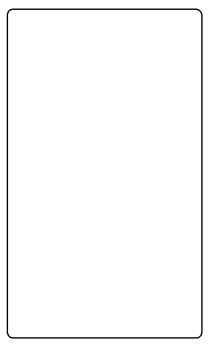
2

1

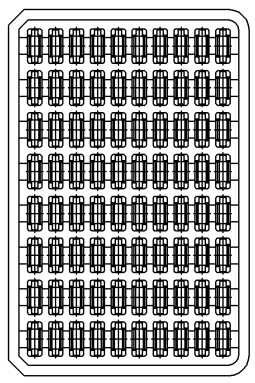
REV	ES	00	100	DIST	REVISIONS	DATE	DMN	APVD
					DESCRIPTION			
					SEE SHEET 1			

NOTES:

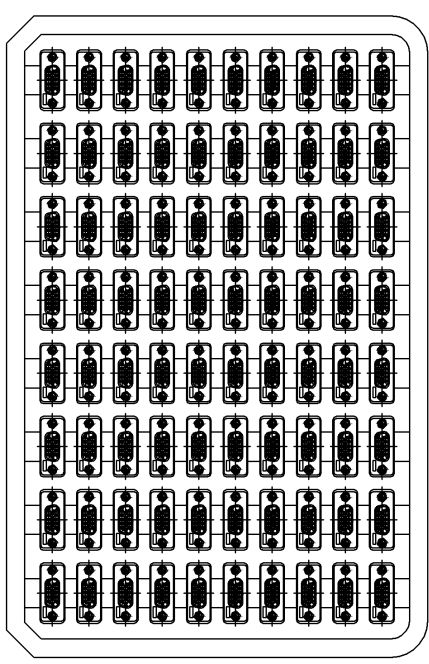
- 1 DIMENSION :  
 TRAY : L=356, W=236, H=30  
 SHIPPING BOX : L=370, W=250, H=225
- 2 QYANTITY :  
 80 PCS/TRAY  
 8 TRAYS/SHIPPING BOX(=640 PCS)
- 3 WEIGHT :  
 N.W. : 7.2 KG/ SHIPPING BOX  
 G.W. : 9.28 KG/ SHIPPING BOX



TOP COVER



TRAY



TRAY LAYOUT

THIS DRAWING IS A CONTROLLED DOCUMENT.		DMN	01JUL08	Tyco Electronics Corporation	
DIMENSIONS: mm		CHK	01JUL08	Shanghai, P.R.China.200233	
TOLERANCES UNLESS OTHERWISE SPECIFIED:		APVD	01JUL08	CUSTOMER DRAWING	
0 PLC ± 0.5		NAME		CUSTOMER DRAWING	
1 PLC ± 0.3		SIZE	A3	QAGE CODE	
2 PLC ± 0.2		PRODUCT SPEC		DRAWING NO	
3 PLC ± -		APPLICATION SPEC		1932144	
4 FINISH ± 1.1		WEIGHT		RESTRICTED TO	
MATERIAL		CUSTOMER DRAWING		SCALE 2:1	
				SHEET 2 OF 2	
				REV A	